

# "THRIFTY" SERIES LIGHT DUTY GATE

One of the most popular products manufactured by 2W, the 2W "Thrifty" Series Light Duty Gate provides a triple threat solution to cattle handlers in terms of cost, quality, and availability. Constructed from larger diameter high strength steel tubing compared to the "Diamond Ranch" Series Light Duty Gates, the "Thrifty" Series Light Duty Gates boast increased assembly strength at a surprisingly cost competitive price. The "Thrifty" Series Gate is very popular among 2W dealers, and the majority 2W dealers carry stock of the "Thrifty" Series Gate.

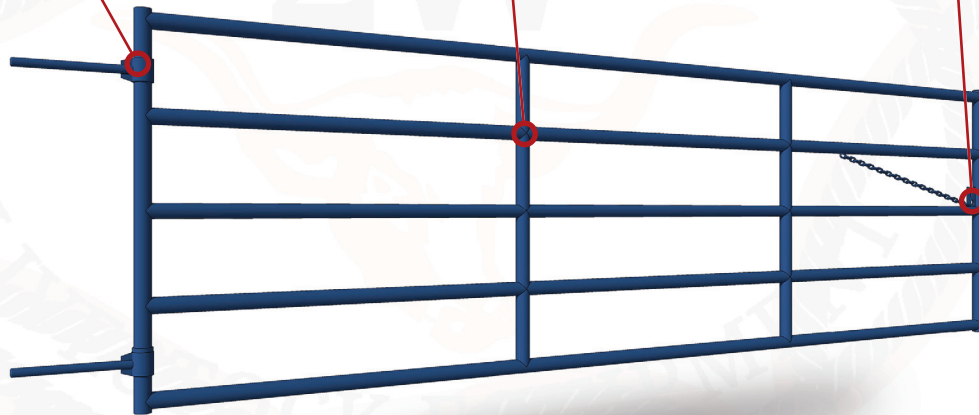
HEAVY DUTY  
GATE HINGE



ROBOTIC  
WELDED SEAMS

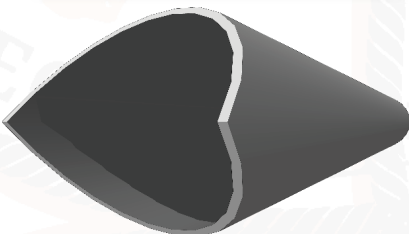


CHAIN-LATCH  
CONNECTING SYSTEM

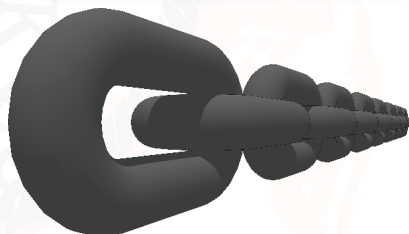


## MATERIAL SPECIFICATIONS

16 GAUGE - 2" DIA.  
ROUND STEEL TUBE



$\frac{3}{16}$ " DIA.  
STEEL LINK CHAIN



# TECHNICAL SPECIFICATIONS



## SPECIFICATIONS

### "Thrifty" Series Light Duty Gates

16 Gauge - 2" Dia. Round Steel Tube | Chain-Latch Connecting System | Heavy Duty Gate Hinges

**IMPORTANT NOTE:** 2W "Thrifty" Series Light Duty Gates utilizes a Chain-Latch Connecting System which allows the gates to be latched to existing panel systems or fence posts. This model of gate uses heavy duty gate hinges that are mounted into existing fence posts.

"Thrifty" Series Light Duty Gates						
Unit Number	Description	Length (ft)		Width (in)		Weight (lbs)
3083	"Thrifty" Series Gate	4	ft	2	in	46 lbs
3084	"Thrifty" Series Gate	6	ft	2	in	59 lbs
3085	"Thrifty" Series Gate	8	ft	2	in	77 lbs
3086	"Thrifty" Series Gate	10	ft	2	in	91 lbs
3087	"Thrifty" Series Gate	12	ft	2	in	104 lbs
3088	"Thrifty" Series Gate	14	ft	2	in	122 lbs
3089	"Thrifty" Series Gate	16	ft	2	in	136 lbs
3343	"Thrifty" Series Gate	18	ft	2	in	153 lbs
3344	"Thrifty" Series Gate	20	ft	2	in	173 lbs

Manufactured in Canada  2Wequipment.com



2W Livestock Equipment is a locally owned livestock handling equipment manufacturing company based in Nanton, Alberta, located 80 kilometers south of Calgary in the heart of cattle country. Being the largest local employer 2W highly values, supports, and participates in local community programs and events.

 /2WEquipment

 @2WEquipment

 @2WEquipment

CONTACT YOUR LOCAL DEALER:

MAIL TO: