

# "LEMSCO" SERIES MEDIUM DUTY FARM GATE

The 2W "Lemsko" Series Medium Duty Mesh Gates are a medium weight farm gate that is designed for use in medium stress cattle handling applications. This gate boasts the same heavy duty gate hinges as the "400, 500, 600" Series Corral Gates which allows for firm installation to existing fence posts and increases gate longevity.

Made from 14 Gauge - 1½" Diameter Round Steel Tube that is laser saddle cut and robotically welded - these medium duty gates utilize the same manufacturing practices as 2W's "400, 500, 600" Series Heavy Duty products. These gates are powder coated in 2W's standard Dark Gray.

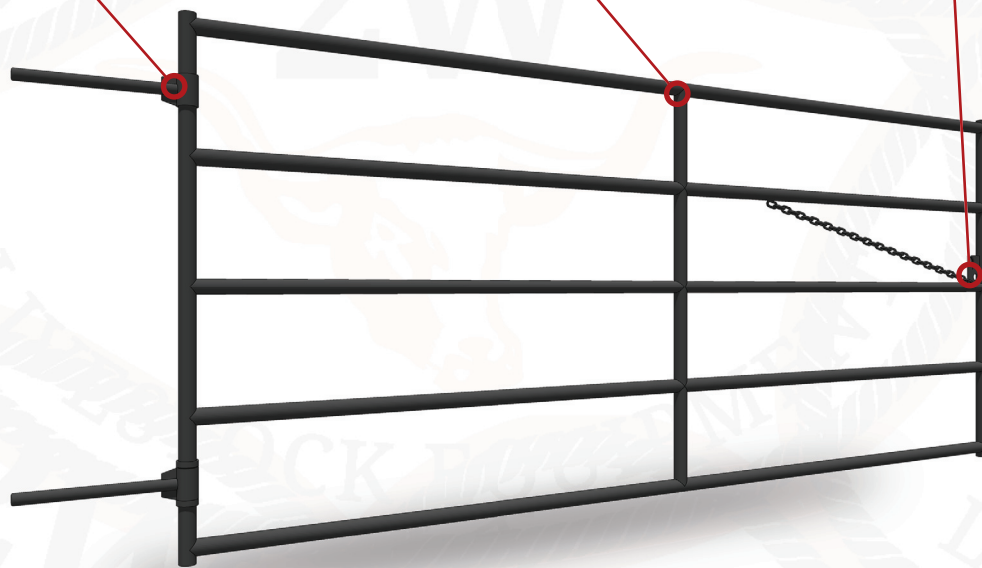
HEAVY DUTY  
GATE HINGES



MEDIUM DUTY  
14 GAUGE TUBE

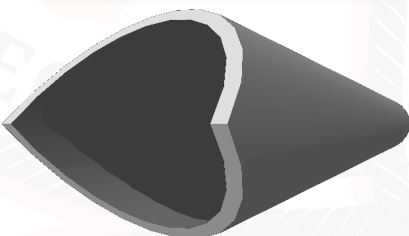


CHAIN-LATCH  
CONNECTING SYSTEM

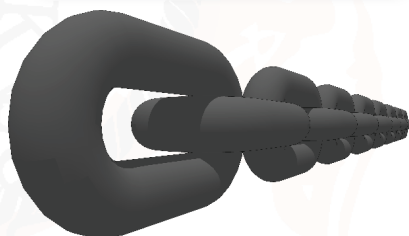


## MATERIAL SPECIFICATIONS

14 GAUGE - 1½" DIA.  
ROUND STEEL TUBE



3/16" DIAMETER  
STEEL LINK CHAIN



# TECHNICAL SPECIFICATIONS



## SPECIFICATIONS

### "Lemsco" Series Medium Duty Panels

14 Gauge - 1½" Dia. Round Steel Tube | Tightly Spaced Mesh Cover | Heavy Duty Gate Hinges | Robotic Welded Seams

#### "Lemsco" Series Medium Duty Farm Gates

Unit Number	Description	Length (ft)	Width (in)	Height (in)	Weight (lbs)
3090	"Lemsco" Series Farm Gate	4 ft	1.5 in	48.5 in	43 lbs
3091	"Lemsco" Series Farm Gate	6 ft	1.5 in	48.5 in	56 lbs
3092	"Lemsco" Series Farm Gate	8 ft	1.5 in	48.5 in	73 lbs
3093	"Lemsco" Series Farm Gate	10 ft	1.5 in	48.5 in	86 lbs
3094	"Lemsco" Series Farm Gate	12 ft	1.5 in	48.5 in	103 lbs
3095	"Lemsco" Series Farm Gate	14 ft	1.5 in	48.5 in	115 lbs
3096	"Lemsco" Series Farm Gate	16 ft	1.5 in	48.5 in	128 lbs
3333	"Lemsco" Series Farm Gate	18 ft	1.5 in	48.5 in	145 lbs
3334	"Lemsco" Series Farm Gate	20 ft	1.5 in	48.5 in	158 lbs

Manufactured in Canada  2Wequipment.com



2W Livestock Equipment is a locally owned livestock handling equipment manufacturing company based in Nanton, Alberta, located 80 kilometers south of Calgary in the heart of cattle country. Being the largest local employer 2W highly values, supports, and participates in local community programs and events.

 /2WEquipment

 @2WEquipment

 @2WEquipment

CONTACT YOUR LOCAL DEALER:

MAIL TO: