

# "EQUINE" SERIES FENCE PANELS

2W's "Equine" Series Fence Panels offer horse owners an attractive and higher quality alternative to traditional horse fencing. Constructed from high strength square tubing, this product has laser cut board inserts to accept 2" x 6" x 70.75". As compared to the **2W Residential Modular Continuous Fence line**, this product utilizes thicker board for increased durability. The laser cut board inserts allow owners to quickly replace boards if damaged during use.

EASY TO INSTALL  
HOOK SYSTEM



CUSTOMER SOURCED  
CHOICE OF  
BOARD INSERTS



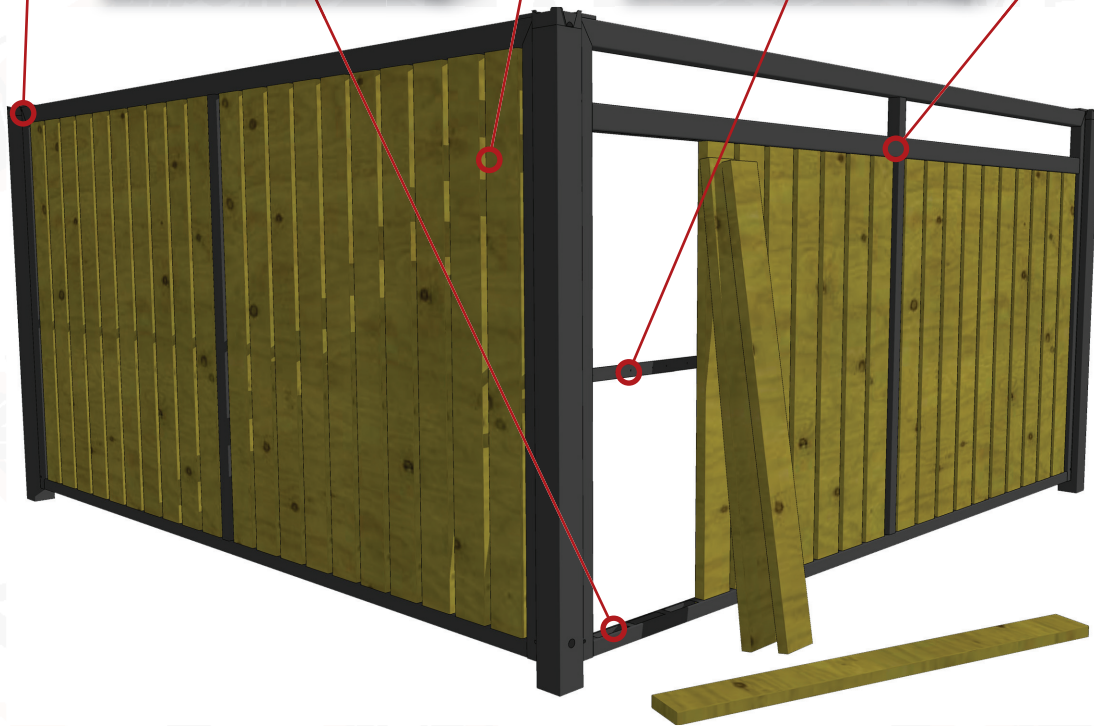
HIGH STRENGTH  
STEEL TUBING



LASER CUT  
BOARD INSERTS

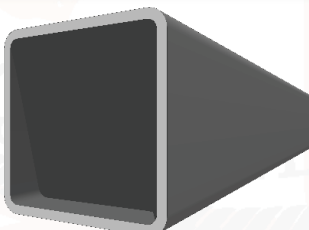


CROSSMEMBER  
REINFORCEMENT

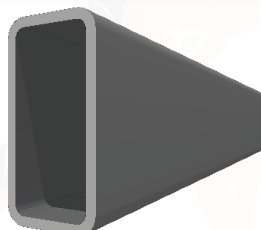


## MATERIAL SPECIFICATIONS

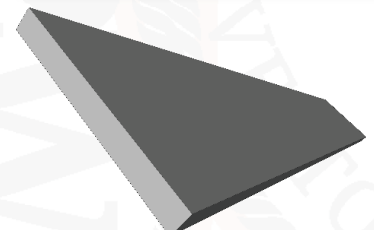
11 GAUGE - 2" X 2"  
SQUARE STEEL TUBE



11 GAUGE - 1" X 2"  
SQUARE STEEL TUBE



1 3/4" X 3/16" THICK  
FLAT BAR



# TECHNICAL SPECIFICATIONS



## SPECIFICATIONS

### "Equine" Series Fence Panels

11 Gauge - 2" x 2" Square Tubing | Laser Cut Board Inserts | Easy to Connect Post System | Choice of Solid or Divided Panels

**IMPORTANT NOTE:** Boards are not provided as part of the product from 2W. Boards must be sourced elsewhere allowing customers the freedom to choose any wood type desired. The laser cut inserts allow for 2" x 6" boards to be easily installed/replaced.

#### "Equine" Series Fence Panels - Panels

Unit Number	Description	Length (ft)	Width (in)	Height (in)	Weight (lbs)
7400	"Equine" Series Fence Panel (Solid)	10 ft	2.125 in	72 in	73 lbs
7402	"Equine" Series Fence Panel (Solid)	12 ft	2.125 in	72 in	85 lbs
7401	"Equine" Series Fence Panel (Divided)	10 ft	2.125 in	72 in	109 lbs
7403	"Equine" Series Fence Panel (Divided)	12 ft	2.125 in	72 in	129 lbs

Requires 2" x 6" x 69.75" wood board inserts

#### Equine Fence Panels - Connecting Posts

Unit Number	Description	Length (ft)	Width (in)	Height (in)	Weight (lbs)
7405	"Equine" Series Connecting Post	4 ft	4 in	108 in	49 lbs
7404	"Equine" Series Connecting Post (Transition)	4 ft	4 in	108 in	49 lbs

Manufactured in Canada  2Wequipment.com



2W Livestock Equipment is a locally owned livestock handling equipment manufacturing company based in Nanton, Alberta, located 80 kilometers south of Calgary in the heart of cattle country. Being the largest local employer 2W highly values, supports, and participates in local community programs and events.

 /2WEquipment

 @2WEquipment

 @2WEquipment

CONTACT YOUR LOCAL DEALER:

MAIL TO: